

## -86°C ULT Freezer DW-86L578S



### GENERAL

Storage Capacity( L/Cu.Ft )		578/20.4
Temperature Range(°C)		-40 ~ -86
Noise (dB(A))		53
Net/Gross Weight (kg)		325/355
Exterior Dimension (W×D×H)	mm	895*998*1980
	in	35.2*39.3*78.0
Interior Dimension (W×D×H)	mm	620*716*1310
	in	24.4*28.2*51.6

### ENVIRONMENTAL & ELECTRICAL DATA

Electrical Power (V/Hz)	208 ~ 230/50
Power(W)	1400
Power Consumption(kW-hr/day)	12
Electrical Current (A)	10
Building Supply Rating (A)	16
Power Lead Length (m)	2.5
Heat Rejection (BTU/day)	40947
Ambient Temperature(°C)	10 - 32

### REFRIGERATION CONFIGURATION

Refrigeration System Type	HC
Compressor Type/Brand/Number	Hermetic Reciprocating Type/Nidec/2
Compressor Capacity (W)	1300+1300
Evaporator Type	Copper Tube Evaporator
Defrost Method	Manual
Refrigerant Charge/Flammable	R600a+R1150+R14 Mix in A / the same in B/Flammable

CONTROLLER/ELECTRICAL SYSTEM FEATURES

Controller Level	Top
Power Switch	16A
Controller Type	Microprocessor
Setpoint Security	Yes
Controller Sensor	PT100
Remote Alarm Terminals	Remote Alarm Port , RS485
Adjustable High/Low Temp Alarms	Y
Auto Voltage Safeguard	Y

CONSTRUCTION

Insulation	VIP+CFC Free Foaming Agent
Exterior Door Seal	Four Seal On the Outside Door Seal Strip
Interior Door Seal	One Seal On the Interior Door Seal Strip
Shelves/Capacity/Dims/Material	3 stainless steel adjustable shelves with dimensionmm 596*657 mm(W*D), max capacity per shelf:80 kg,176.4 lbs
Casters	Y/4
Exterior Material	Color Coating Steel Plate
Interior Material	Color Coating Steel Plate
Door Thickness (mm)	90
Cabinet Thickness (mm)	90
Inner Door	Four Solid Door
Condenser Type	Fin condenser
Fan Brand	EBM
Back Up Battery For Alarm Functions	Support high/low temperature, power failure, door open, sensor failure, high ambient temperature, hot condenser, low battery alarms and cooling system failure alarm

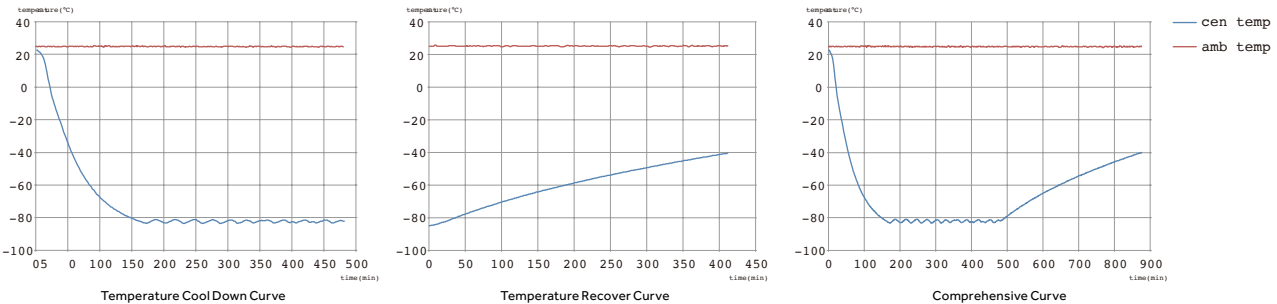
PERFORMANCE

Temperature Uniformity(°C)	±5
Temperature Accuracy(°C)	1
Cool Down Time (25 ℃ ambient to -80℃) mins	180
Warm Up Time (25 ℃ ambient -80℃ to -50℃) mins	280
1 Min Door Open Recovery Time (ambient 25℃ running temp -80℃)mins	30

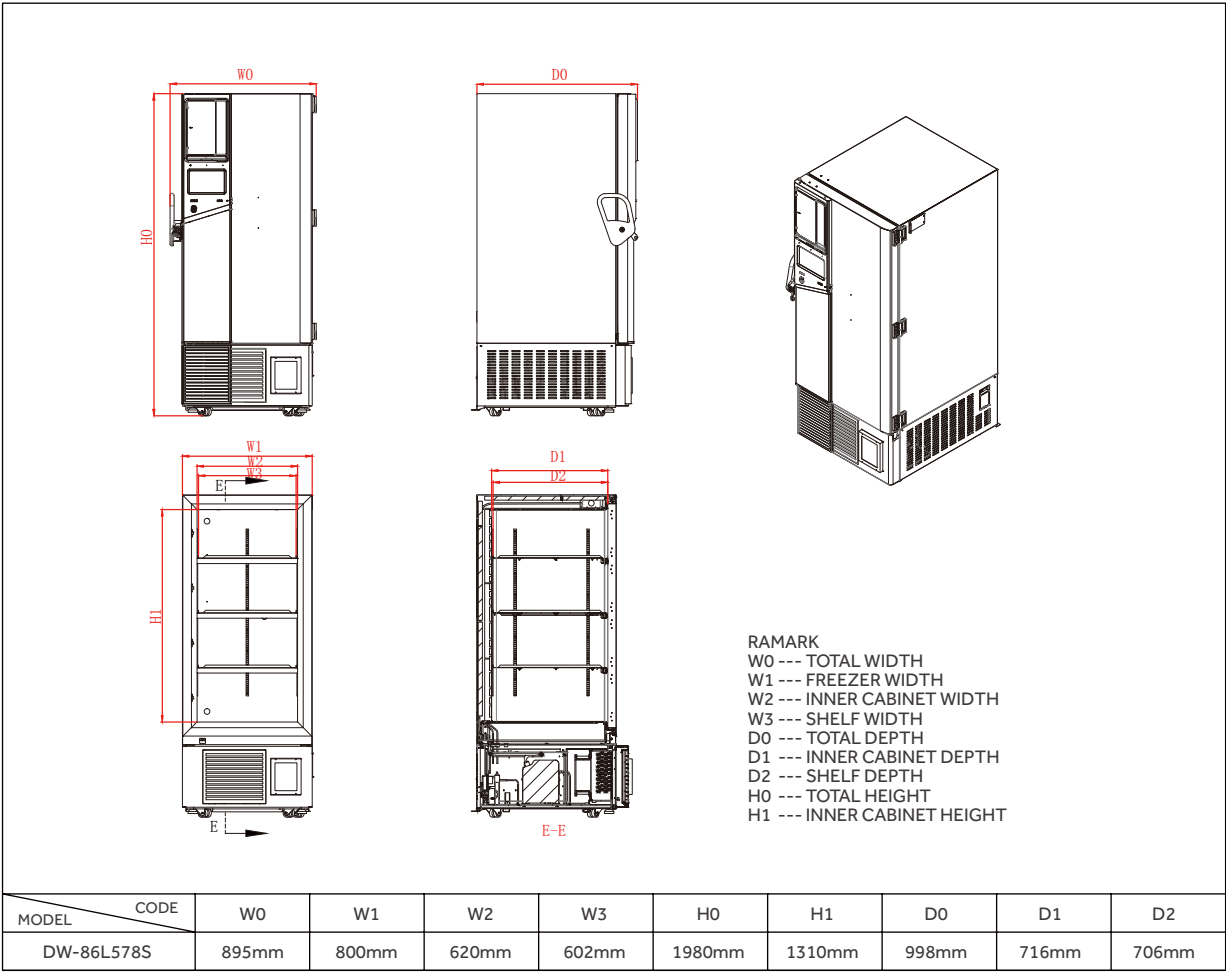
CERTIFICATE

CE

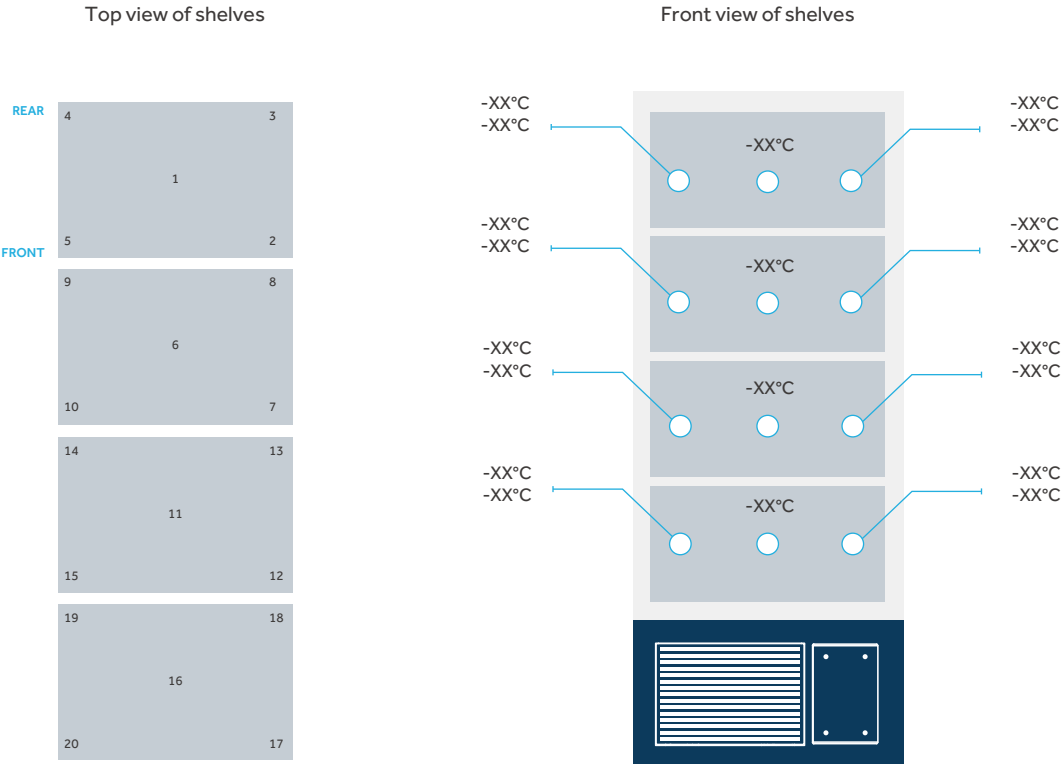
TYPICAL PERFORMANCE CHARACTERISTICS IN 25°C AMBIENT



PRODUCT DIMENSION DRAWINGS



TYPICAL CABINET TEMPERATURE MAP



°C	1	2	3	4	5	6	7	8	9	10
Max.	-80.2	-79.7	-80.0	-79.7	-80.5	-81.0	-80.6	-81.3	-81.7	-80.9
Min.	-84.1	-83.2	-83.6	-83.5	-84.2	-83.6	-83.1	-84.4	-84.9	-83.8
Avg.	-82.2	-81.5	-81.8	-81.6	-82.4	-82.3	-81.9	-82.9	-83.3	-82.4

°C	11	12	13	14	15	16	17	18	19	20
Max.	-81.1	-80.3	-81.0	-80.2	-80.6	-78.6	-78.8	-78.4	-79.1	-79.4
Min.	-83.2	-82.4	-82.4	-82.6	-83.1	-81.3	-81.5	-81.2	-81.5	-81.9
Avg.	-82.2	-81.4	-82.3	-81.4	-81.8	-80.0	-80.2	-79.8	-80.3	-80.7

Ihr Fachhändler:  
[www.axon-labortechnik.de](http://www.axon-labortechnik.de)



Axon Labortechnik GmbH  
Im Braumenstück 16 - D-67659 Kaiserslautern  
Verkaufsbüro Tel. 06223/95 41 190 Fax: 06223/95 40 714  
[info@axon-labortechnik.de](mailto:info@axon-labortechnik.de)

